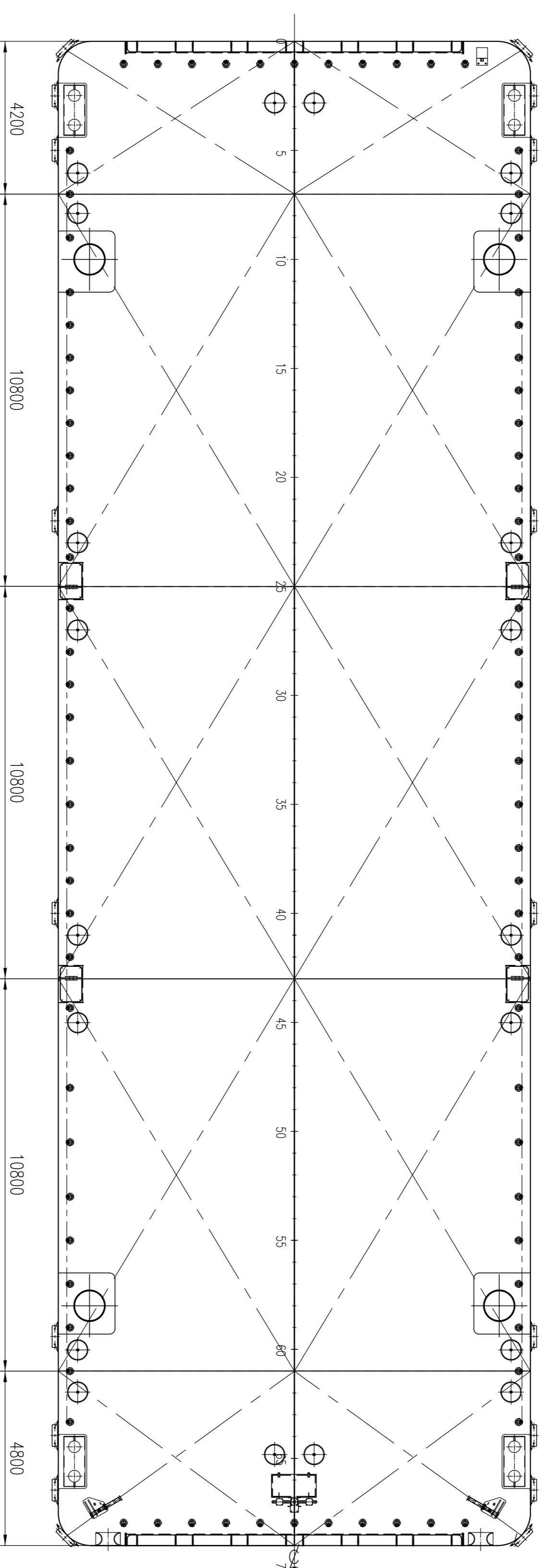
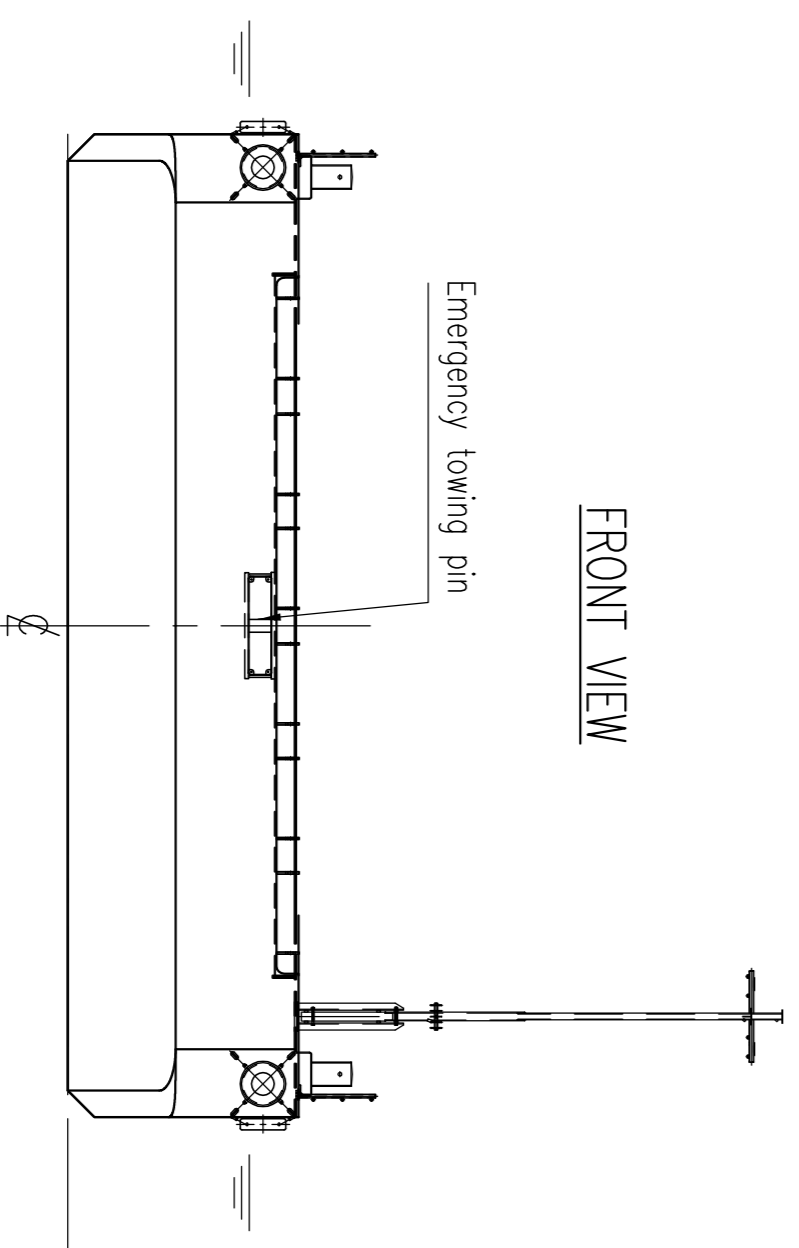


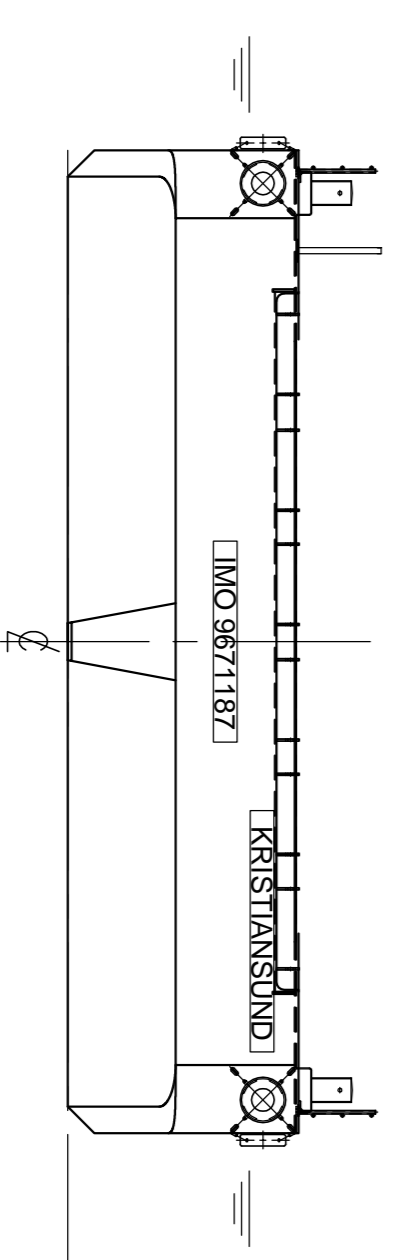
SIDE VIEW



TOP VIEW

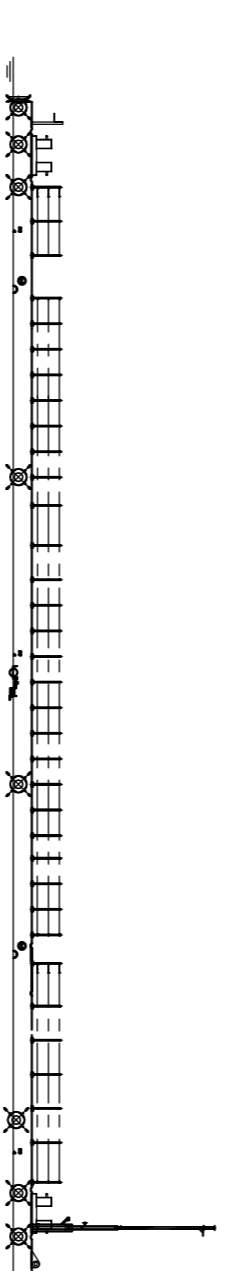


FRONT VIEW



AFT VIEW

Damen Stan Pontoon® 4113



Main dimensions

Length mld. 41.40 m
Breadth mld. 13.00 m
Depth mld. 3.00 m
Draft 2.40 m
Deadweight 980 ton
Uniform deck load 10 ton/m²

DAMEN DAMEN SHIPYARDS GORINCHEM
 Industrieweg Antwerpen West 20 P.O. Box 1
 4200 AA Gorinchem The Netherlands Phone +31 (0) 18263 21 11
 Fax +31 (0) 18263 21 89 info@damen.nl www.damen.nl

General Arrangement

Format	A1	Standard Type	Stan Pontoon 4113	Project ID	523704
Scale	1:100	S.C.No.	Project Ship type	Plan	Sheet
Units	mm	Approved	245757 - SPG 4113	GA	001
Drawn	P&B	Drawing ID	245757 - SPG 4113	GA	001
Checked					
Approved					
IFS Doc No.					